

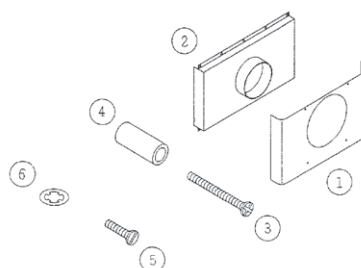
morsø

By appointment to  the Royal Danish Court

Fitting Instructions Morsø 3400 outside air kit North America

1. Contents of outside air kit

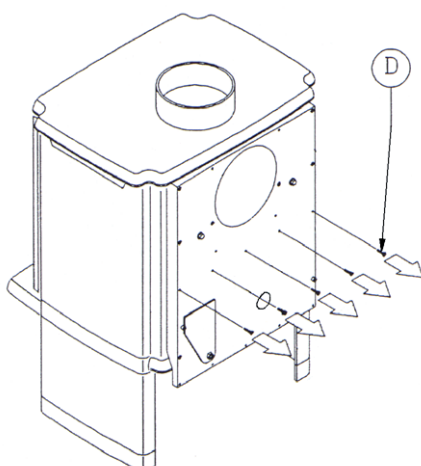
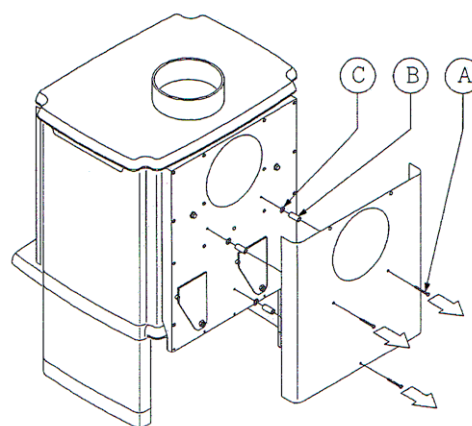
1. ____ 1 Air adaptor – 71345000
2. ____ 2 Distance busch 22,5 mm – 54345500
3. ____ 1 Screw 4x35 – 74143500
4. ____ 2 Nuts 4mm – 74620400
5. ____ 5 Screws M4x8 – 74281800
6. ____ 1 Screws M3,5x9,5 – 791835



2. How to remove the existing rear heatshield

2.1

Remove the rear heat shield by loosening and removing the 3 screws (A). The removed screws (A), and distance rings (B), and nuts (C) are not to be used anymore.



2.2

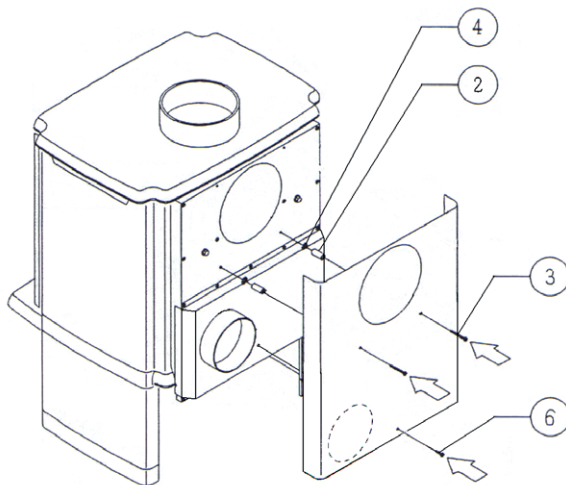
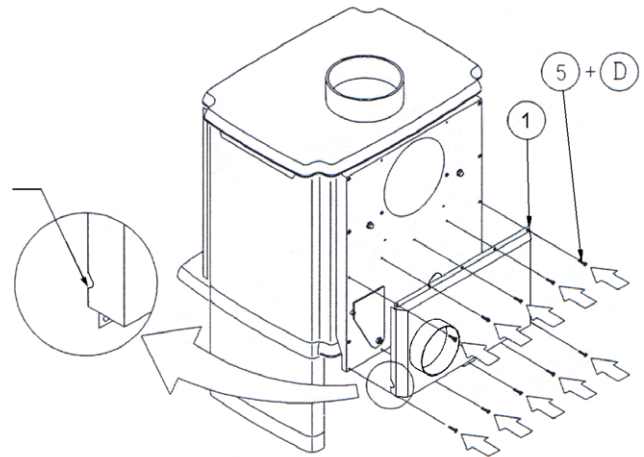
The 5 screws shown on the drawing as (D) are unscrewed and kept. These are to be re-used when fitting the air box.

3. Fitting of outside air kit

3.1

Install the air adaptor (1) using 10 M4x8 screws. This includes the screws (5+D) removed as in 2.2.

Please be sure that the air adaptor is properly sealed and that the cut-out on the edge of the air adaptor fits snugly around the stove base plate.



3.2

The heatshield is now to be installed.

Push the screws (3) through the two holes in the heatshield, slide the bushes and nuts (2+4) onto the screws. Now fasten the rear heatshield onto the stove. Your last step is to secure screw (6) onto the air adaptor.

The stove is now ready for use.

4. Dimension for air inlets

Floor to center of the air collar:

| | | |
|-----------|-----------|-----------|
| 3410 | 3440 | 3450 |
| 11,2 inch | 13,2 inch | 13,2 inch |
| 284,5 mm | 336 mm | 336,5 mm |

Right side of the unit to center of air collar:

| | | |
|----------|----------|----------|
| 3410 | 3440 | 3450 |
| 5,3 inch | 6,6 inch | 6,6 inch |
| 133,5 mm | 167 mm | 167 mm |

